

Xochitl Esparza, TANF Program Manager

Authorized Signature

Number: SS-IM-12-029

Issue Date: 06/22/2012

Topic: Agency Wide Policy

Subject: Effective June 22, 2012 -- Change in DHS/OHA/AAA Access to Child Support Program Screens

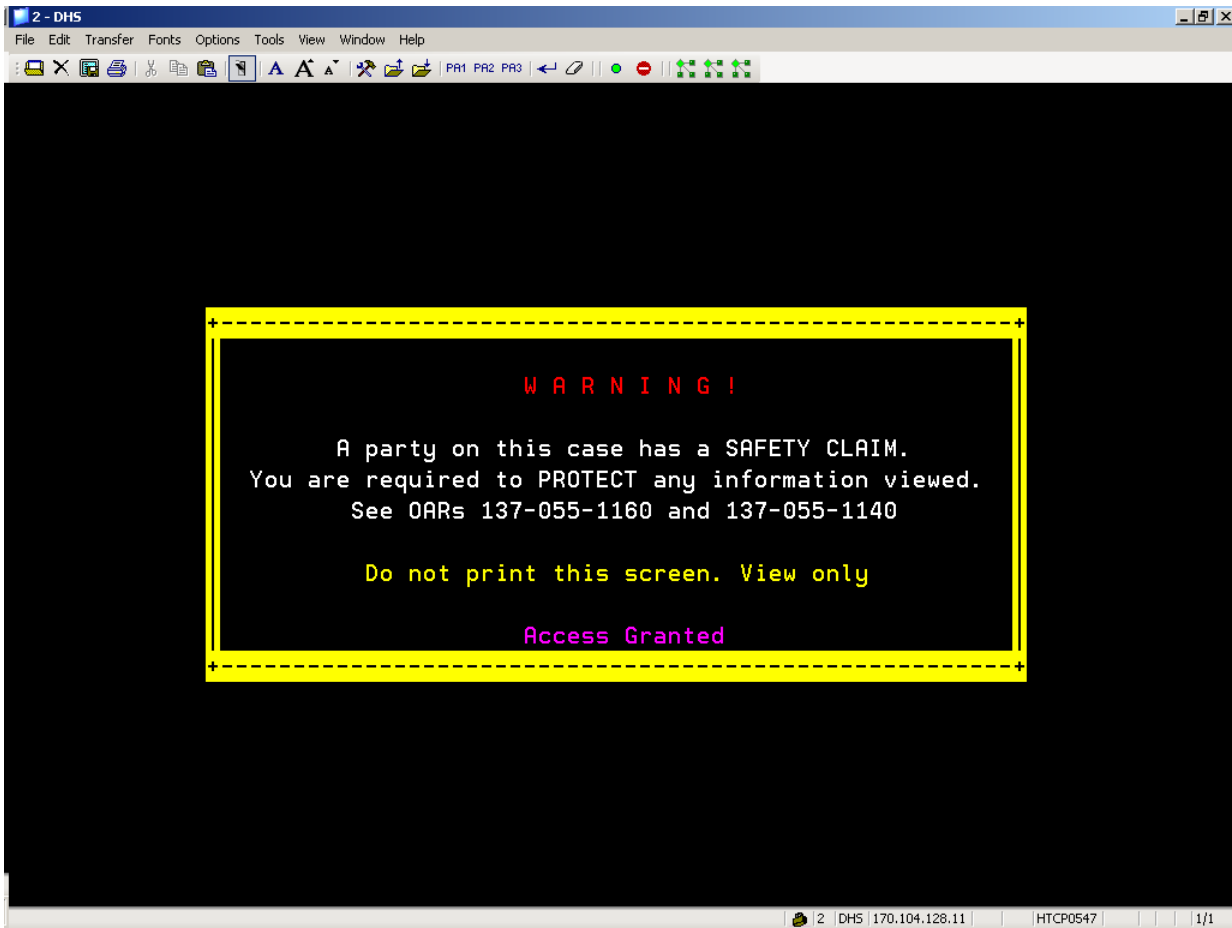
Applies to (check all that apply):

- | | |
|---|--|
| <input type="checkbox"/> All DHS employees | <input type="checkbox"/> County Mental Health Directors |
| <input checked="" type="checkbox"/> Area Agencies on Aging | <input checked="" type="checkbox"/> Health Services |
| <input checked="" type="checkbox"/> Children, Adults and Families | <input checked="" type="checkbox"/> Seniors and People with Disabilities |
| <input type="checkbox"/> County DD Program Managers | <input type="checkbox"/> Other (please specify): |

Message: Effective June 22, 2012, the Division of Child Support (DCS) made a change in DHS/OHA/AAA staff access to the child support mainframe (CSEAS or SMUX) screens. This change affects Self-Sufficiency (SSP), Child Welfare (CW), Aging and People with Disabilities (APD), Area Agencies on Aging (AAA) and Oregon Health Authority (OHA). The change means DHS/OHA/AAA staff will once again be able to access the child support mainframe screens for any child support case that is coded:

- Claim of Risk for Nondisclosure of Information (COR);
- Good Cause for Noncooperation with Child Support or Medical Support (GC);
- Address Confidentiality Program (ACP).

When DHS/OHA/AAA staff access a child support case that is coded COR, GC or ACP, the following message will appear:



DCS was able to work with federal partners to bring this flexibility back to partner agencies.

This Information Memorandum is intended to make staff aware that DHS/OHA/AAA's access to the child support mainframe screens will change on June 22, 2012. This change means if you did not have access to the screens after the DCS required change on December 13, 2011, you will now have access to those screens once again.

Note: *There is no change in DHS/OHA/AAA's access to child support mainframe screens for child support cases not coded COR, GC or ACP.*

If you have any questions about this information, contact:

Contact(s):

APD: Karen Gulliver 503-945-6460

CW: Dianne Olson 503-945-6865
Ramona Kline-Mayes 503-945-5661

OHA: Vonda Daniels 503-945-6088
Christy Garland 503-945-5519
Jewel Kallstrom 503-947-2316
Michelle Mack 503-947-5129

SSP: Amy Sevdv 503-945-7017
Lisa Buss 503-945-7017